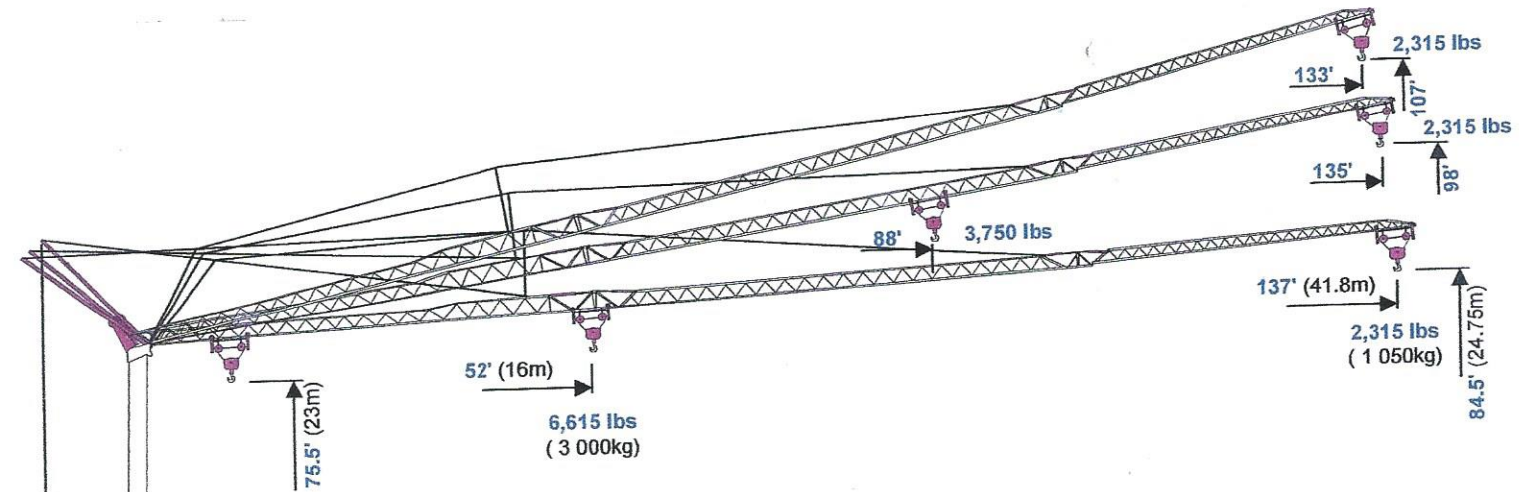


VICARIO

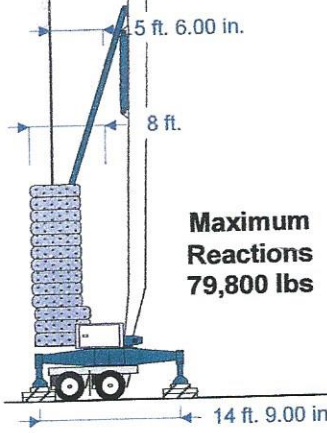
Self-Erecting Crane

V 23137/85

(2,315 lbs, 137'/85')

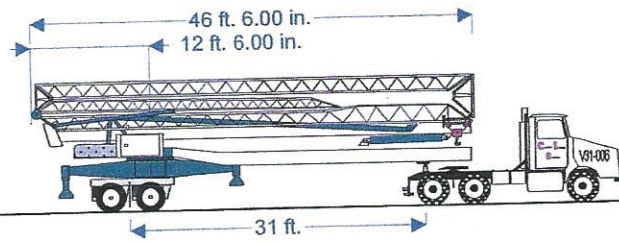


Power Requirements
Single Phase OR Three Phase
240V or 480V

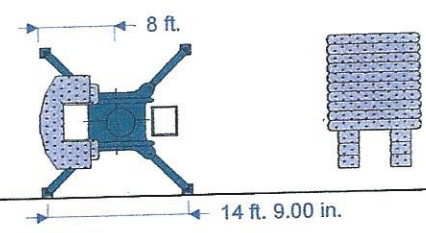


Maximum Reactions
79,800 lbs

Hydraulic Outriggers



- Base Ballast X 6 2,975 lbs
- Ballast Blocks X 10 4,300 lbs
- Total Ballast: 60,860 lbs
- Crane Weight: 39,250 lbs
- Total Erected Weight: 100,110 lbs



2 Part Block	Hook	Rt.	44	46	52	59	66	72	79	85	92	98	105	112	118	125	131	137
	Radius	Meters	13.3	14	16	18	20	22	24	26	28	30	32	34	36	38	40	41.8
2 Part Block	138'	Lbs	6,615	6,615	6,615	6,242	5,515	4,930	4,454	4,055	3,718	3,429	3,177	2,957	2,763	2,591	2,437	2,315
	42m	KG	3,000	3,000	3,000	2,831	2,501	2,236	2,020	1,839	1,686	1,555	1,441	1,341	1,253	1,175	1,105	1,050
2/4 Part Block	Hook	Rt.	44	46	52	59	66	72	79	85	92	98	105	112	118	125	131	137
	Radius	Meters	13.3	14	16	18	20	22	24	26	28	30	32	34	36	38	40	41.8
2/4 Part Block	138'	Lbs	8,820	8,324	7,076	6,139	5,411	4,825	4,346	3,947	3,610	3,319	3,067	2,849	2,655	2,481	2,326	2,205
	42m	KG	4,000	3,775	3,209	2,784	2,454	2,188	1,971	1,790	1,637	1,505	1,391	1,292	1,204	1,125	1,055	1,000